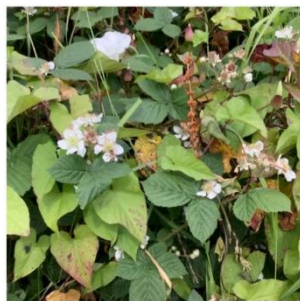


Generation Wild and Yardley Wood Community Primary School

Since going to WWT Slimbridge and participating the Generation Wild Project both in 2023 and 2024, Yardley Wood Community Primary School has undergone lots of positive changes as a result of the impact the project has had on the children of Year 3. The development of six large wildflower boxes in the playground, bedding plants and some new sapling fruit trees have filled the children with wonder and excitement at each stage of their growth. The children have been invested in and taken part in the development of the boxes from seed planting, to watering and germination, to flowering. These new additions to the playground have made the children more aware of and more willing to explore the existing flora and fauna in the playground and their environment. They have identified the flowers and hunted for minibeasts that have been attracted to the blooms. The boxes and fruit trees have been used as a stimulus for various assemblies and activities, including World Bee Day, colour matching and comparing British flora to the flora of the Amazon.



This enthusiasm for exploring the environment has filtered down to our littlest members of Yardley Wood who have been on minibeast hunts in our developing forest school and have been learning about the lifecycles of butterflies.





PIC•COLLAGE

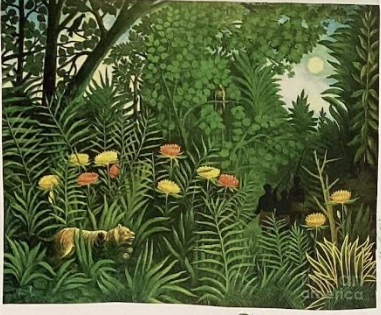



PIC•COLLAGE

Generation Wild has inspired our budding artists to focus on nature in their art, looking at artists like Henri Rousseau and Georgia O'Keeffe. They studied the shapes of leaves, investigated some endangered animals and looked at flowers close up. They then were able to use their knowledge and confidence gained from both Generation Wild and their art lessons to critique each other's work and to create observational sketches whilst out on trips.

12/4/24

Exotic landscape with tiger and hunters, 1907.

Similarities

- They have big leaves in the foreground
- One has lot's of shadows
- The painting has more leaves than the photograph

He died in 1910. When he died he was 66 years old.


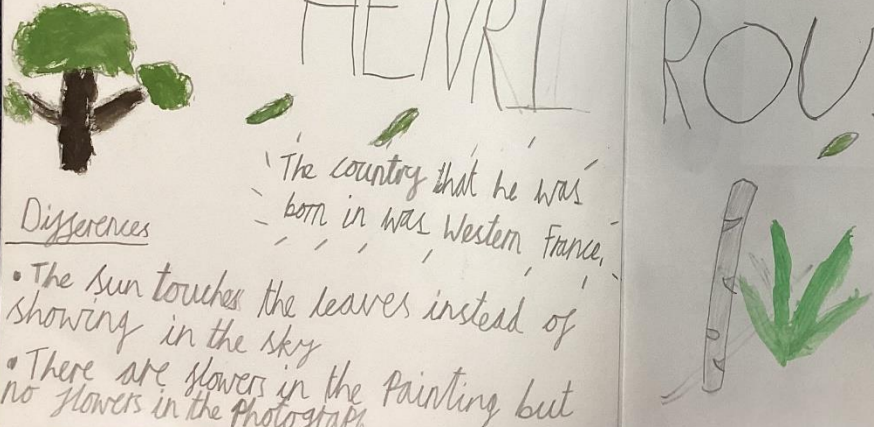
Henri Rousseau was born in 1874.

HENRI ROUSSEAU

The country that he was born in was Western France.

Differences

- The sun touches the leaves instead of showing in the sky
- There are flowers in the painting but no flowers in the photograph

12.4.24 **Henri Rousseau**

Henri Rousseau was born in western France

15.4.24



Similarities

Both the pictures are meant to be the rainforest. There are lots of shades of green. They both have plants and leaves.

Differences

One is a photograph and the other isn't real. They are different pictures. One has animals and the other doesn't.

Monkeys and Parrot in the Virgin Forest, 1906

black + yellow + brown + green

green + white

yellow + white

white + dark blue

dark green

yellow + green

gray

A lot of brown

green + yellow + black

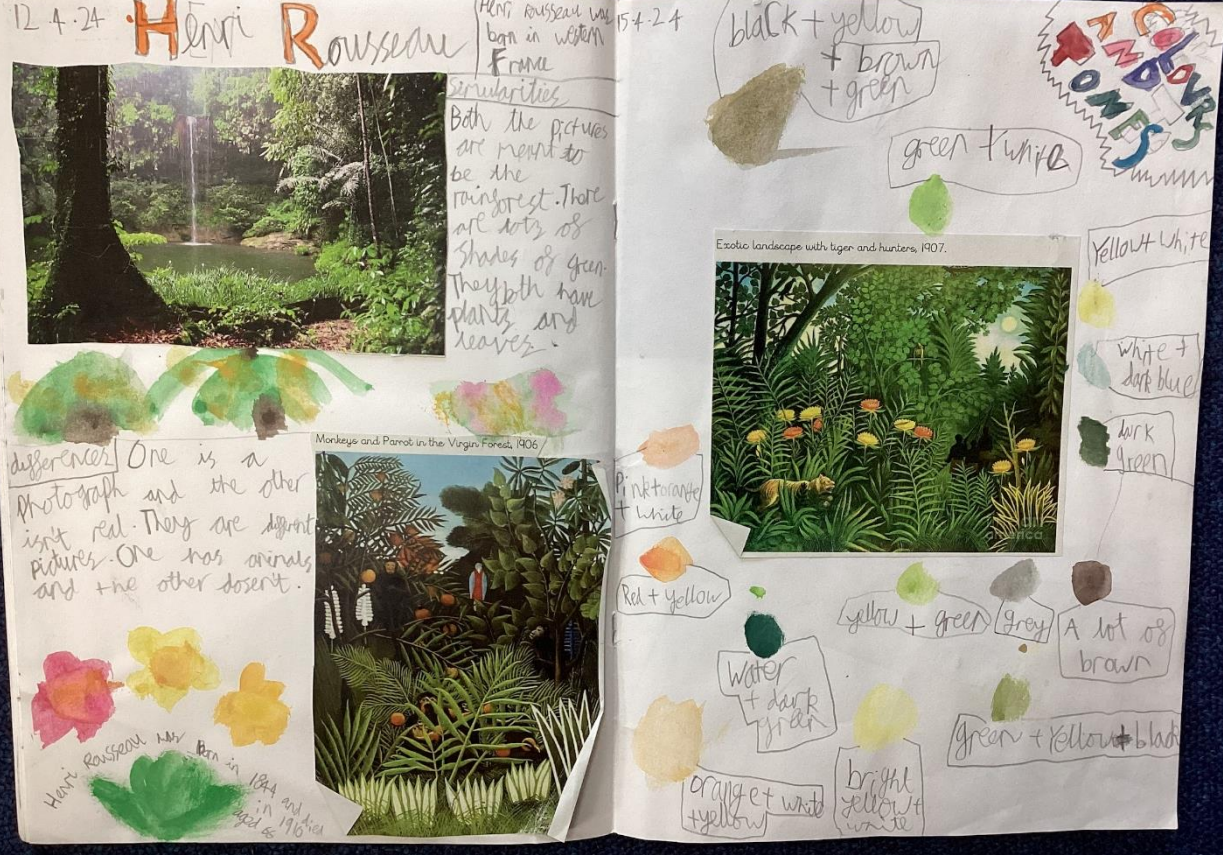
water + dark green

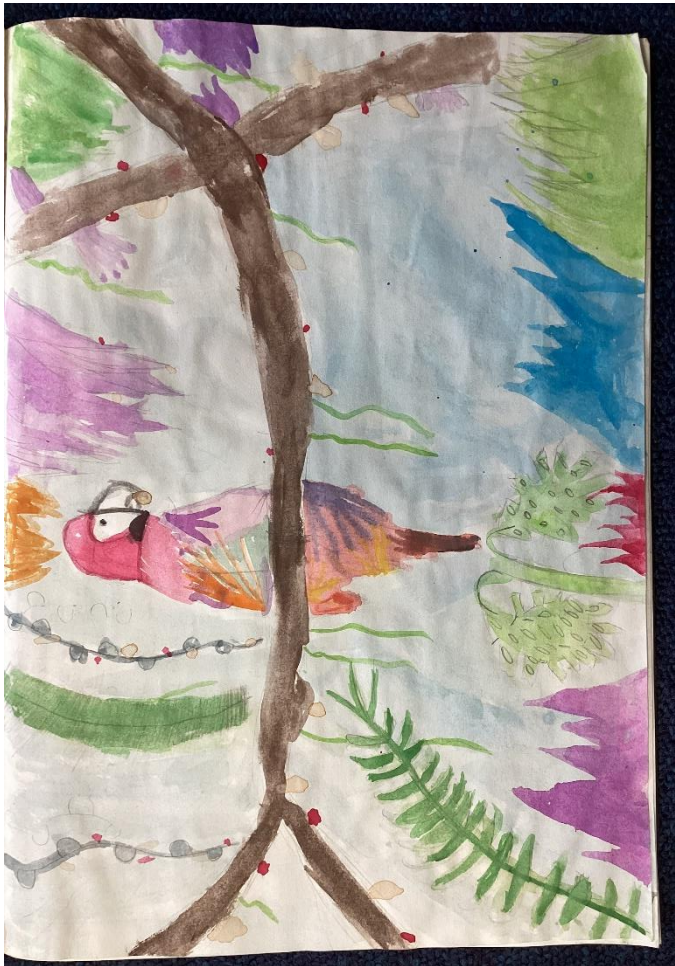
bright yellow + white

orange + white + yellow

pink/orange + white

red + yellow





26.4.24

GEORGIA



Red Poppy (1927)

I really like the colour when in this painting because I think the colours all stand out and contrast with each other.



She painted things she found in the deserts of New Mexico. She went blind and yet she still continued.

Name: Georgia O'Keeffe



When was she alive?
1897-1986

What country was she from?
USA

Which technique did she use?
oil palette in vibrant bold colours abstract

O'KEEFE



Yellow Cactus (1940)

It looks sleepy because it looks like it has an eye in the middle.

Morning Glories (1935)



It reminds me about the Egyptian God Ra being born and then dying.



26.4.24



Georgia

O'KEEFE



Name: Georgia O'Keeffe



When was she alive?
1897-1986

What country was she from?
USA

Which technique did she use?
oil painting in vibrant bold colours.
Abstract art

She went blind but carried on painting.

Jimson Weed/White Flower No. 1 (1932)



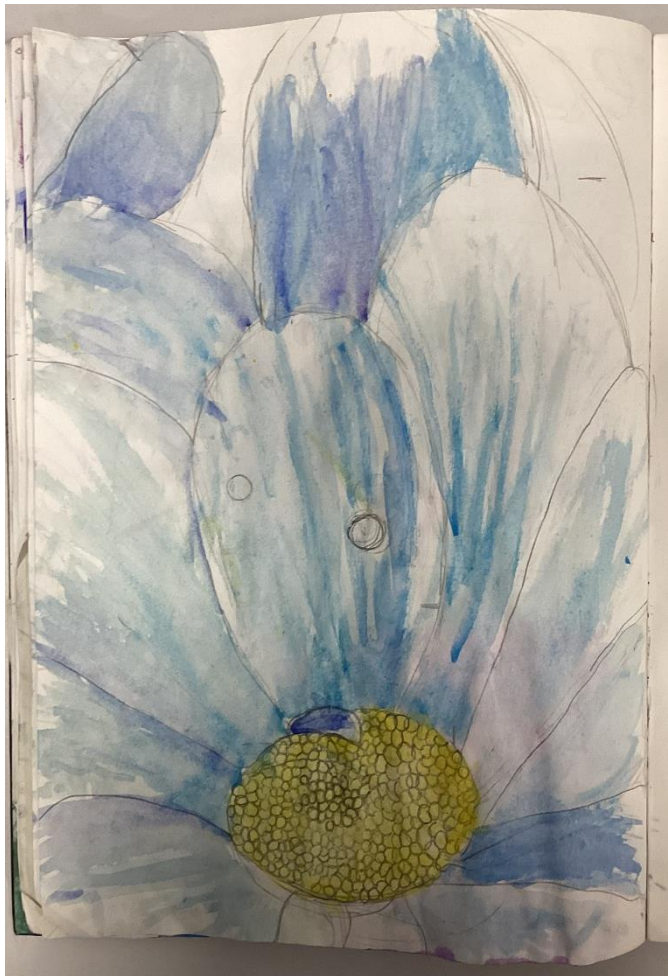
I like how the flower stands out against the leaves. I like that it's close up. I think that it should look realistic.



Oriental Poppies (1927)

I like that it looks like fire. I like that you can see tiny details. I think there should be a background.







Our thriving onsite forest school has used ideas gained from the Generation Wild project over the last two years to create activities that allow the children to get closer to wildlife and flora. Year 6 made bird feeders from natural materials to support the birds over the winter, Year 4 have built and maintained bug hotels and Year 2 have been exploring the forest school through observational drawings of the plants found there.



One of our teaching assistants, who visited Slimbridge with us last year, has since gone on to set up an extremely popular and fruitful gardening club attached to our forest school. As well as wild flowers, the children have grown a variety of fruit and vegetables that have been used to supplement our school snacks. This club has really helped some of our more challenging children to engage with nature in a positive and productive way.



Following our trip to Slimbridge, Year 3 completed Geography fieldwork in the Dingles, our local woodland. We made journey sticks to record our trip using items we found along the way, and completed lots of our Generation Wild challenges, such as listening to the birds and a stream, finding the rainbow in nature and making natural whistles.



The pupils of Yardley Wood Community Primary have been so inspired by Generation Wild and invested in their mission to care for their environment. It has been a joy to see their enthusiasm and the care they show. These posters have been popping up all over school and some children have even set up their own eco club and spend their break time litter picking.

